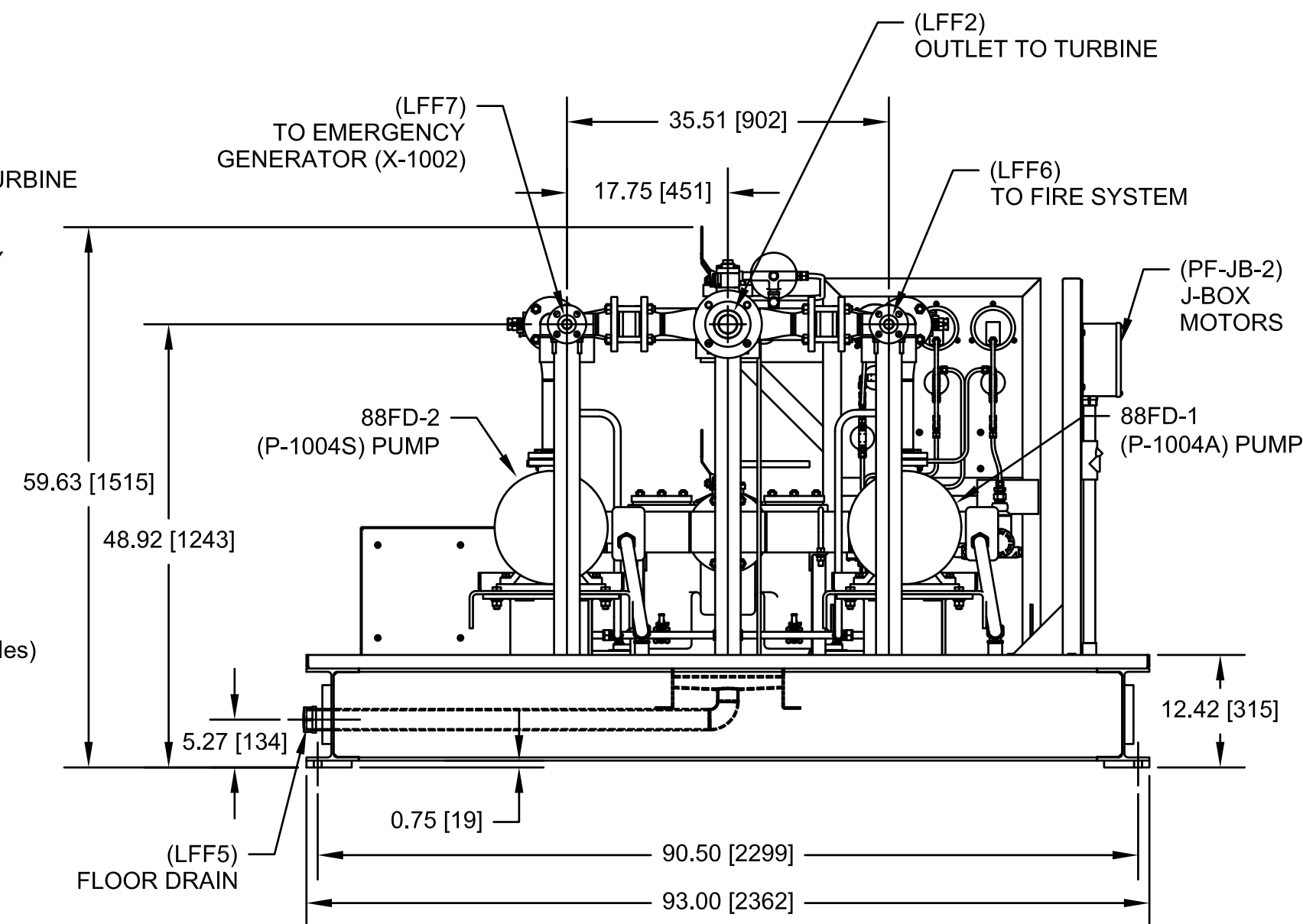
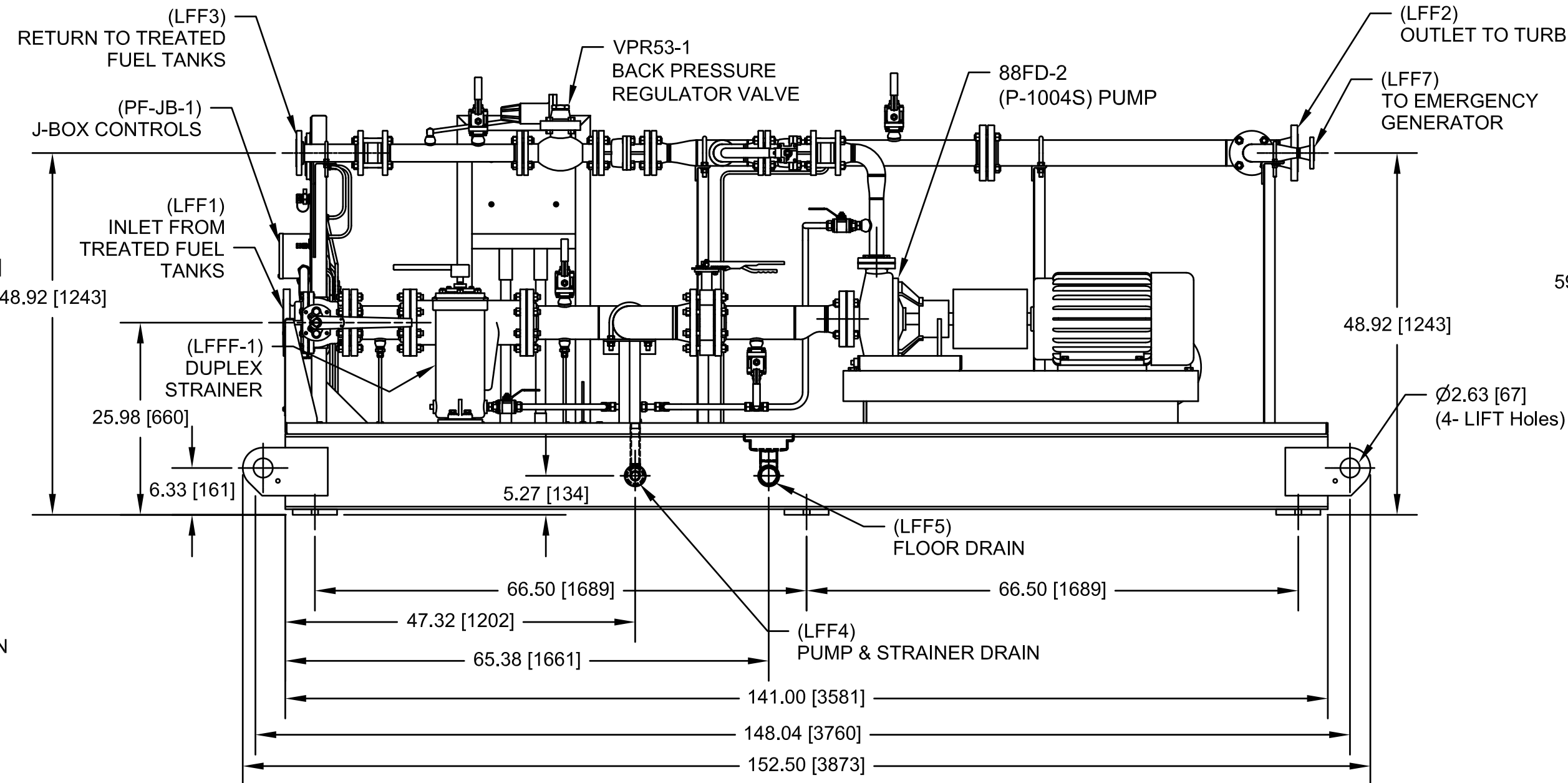
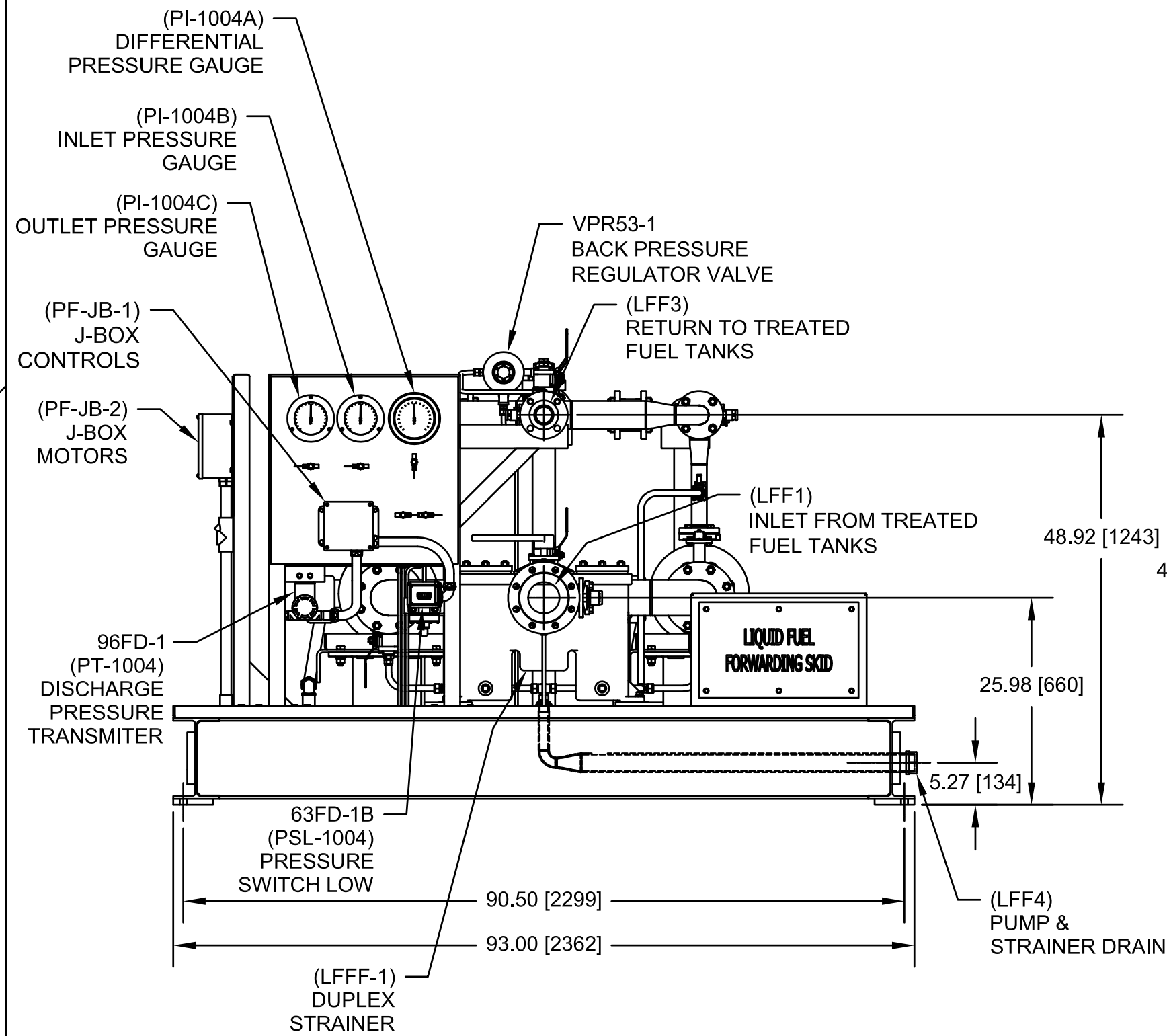
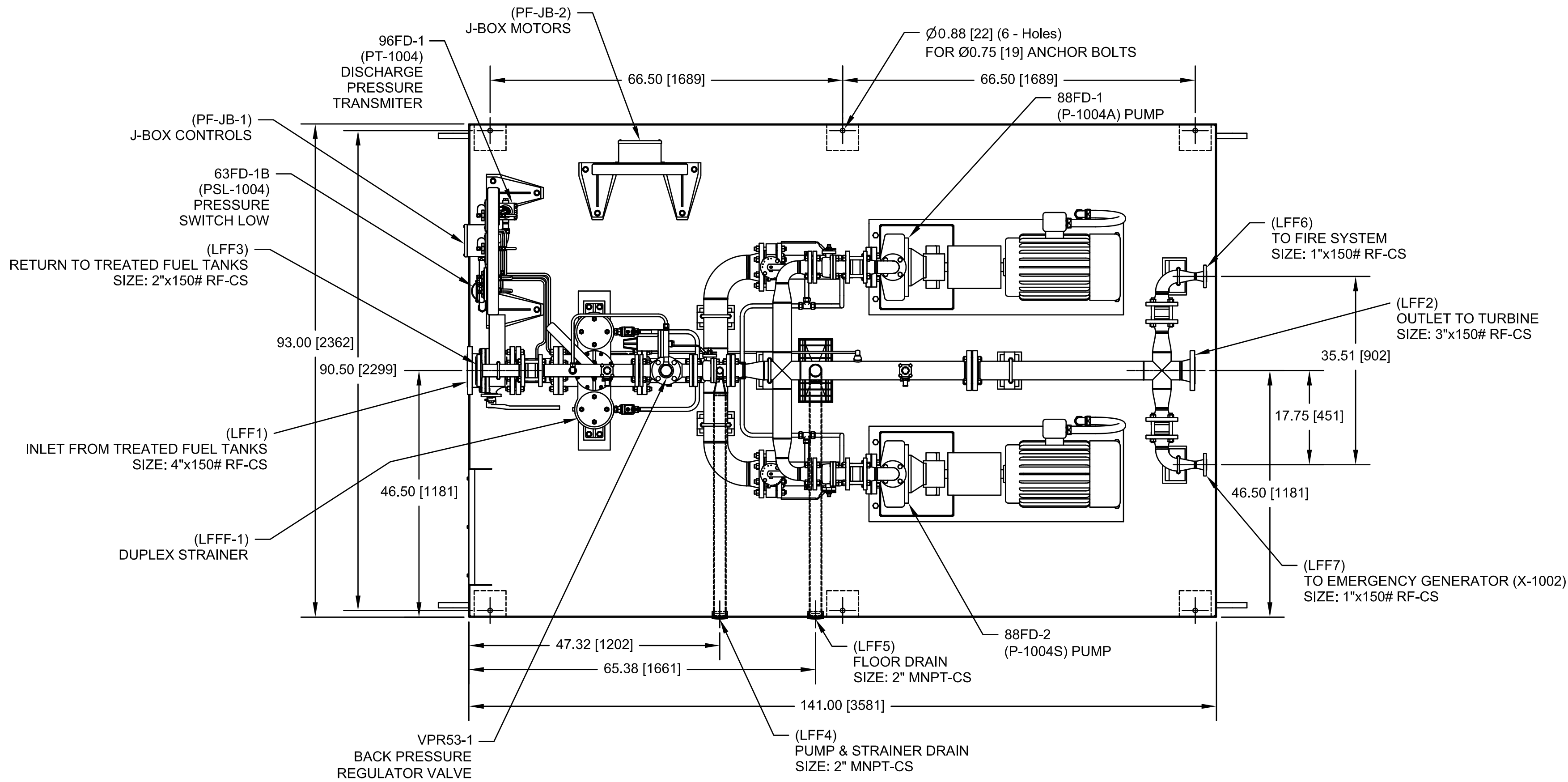


LINIA DE CORTE DE ORIGINAL
LINIA DE CORTE DE COPIA

AGM-02-0204-PLA-M-0034
N° PLANO:

IMPORTANTE
ESTE PLANO FUE ELABORADO EN AUTOCAD V.2008
CUALQUIER MODIFICACION REALIZADA EN CAMPO
DEBERA SER NOTIFICADA A LA UNIDAD
RESPONSABLE.
QUEDA PROHIBIDO CORREGIR ESTE PLANO SIN
AUTORIZACION DE ESTA UNIDAD.
ALL DIMENSIONS IN BRACKETS [] ARE
MILLIMETER; EXPRESSED DIMENSION
ARE INCHES



- NOTES:
- DO NOT PAINT INTERNALLY OR EXTERNALLY THREADED PARTS OR PARTS WITH FINISHED SURFACES THAT HAVE BEEN MACHINED FOR TIGHT TOLERANCE FITUP.
 - PAINT FINISH:
BLAST SSPC-SP10NACE 2,2 mil
2-COATS PHENICON HS (LIGHT GRAY)
PART-A (920A175)
PART-B (700-C-685)
H&C SHARK GRIP ADDITIVE (SLIP RESISTANT ADDITIVE) ON WALKING SURFACES.
 - CHECK FOR RESIDUAL STRESS AT THE PUMP PRIOR TO RELEASE AND OPERATION.
 - PRIOR TO OPERATION, THE FOLLOWING INSPECTIONS & TASKS SHOULD BE PERFORMED. -ALIGNMENT OF THE MOTOR & PUMP.
-LUBRICATION OF THE MOTOR & PUMP.
-CALIBRATION OF THE INSTRUMENTS & GAUGES.
-VISUAL INSPECTION OF THE STARINER BASKETS.
 - SKID WEIGHT = 6200 lbs [2812kg]
 - ANCHDR SIZE = Ø0.75 [19]
 - REFER TO DRAWING _____ FOR FOUNDATION DETAILS
 - REFER TO AGM-02-0204-PLA-G-0061 FOR INTERCONNECTIONS
 - REFER TO AGM-02-0204-PLA-I-0046 (DEVICE SUMMARY) MLI 0414 FOR INSTRUMENT SET POINTS.

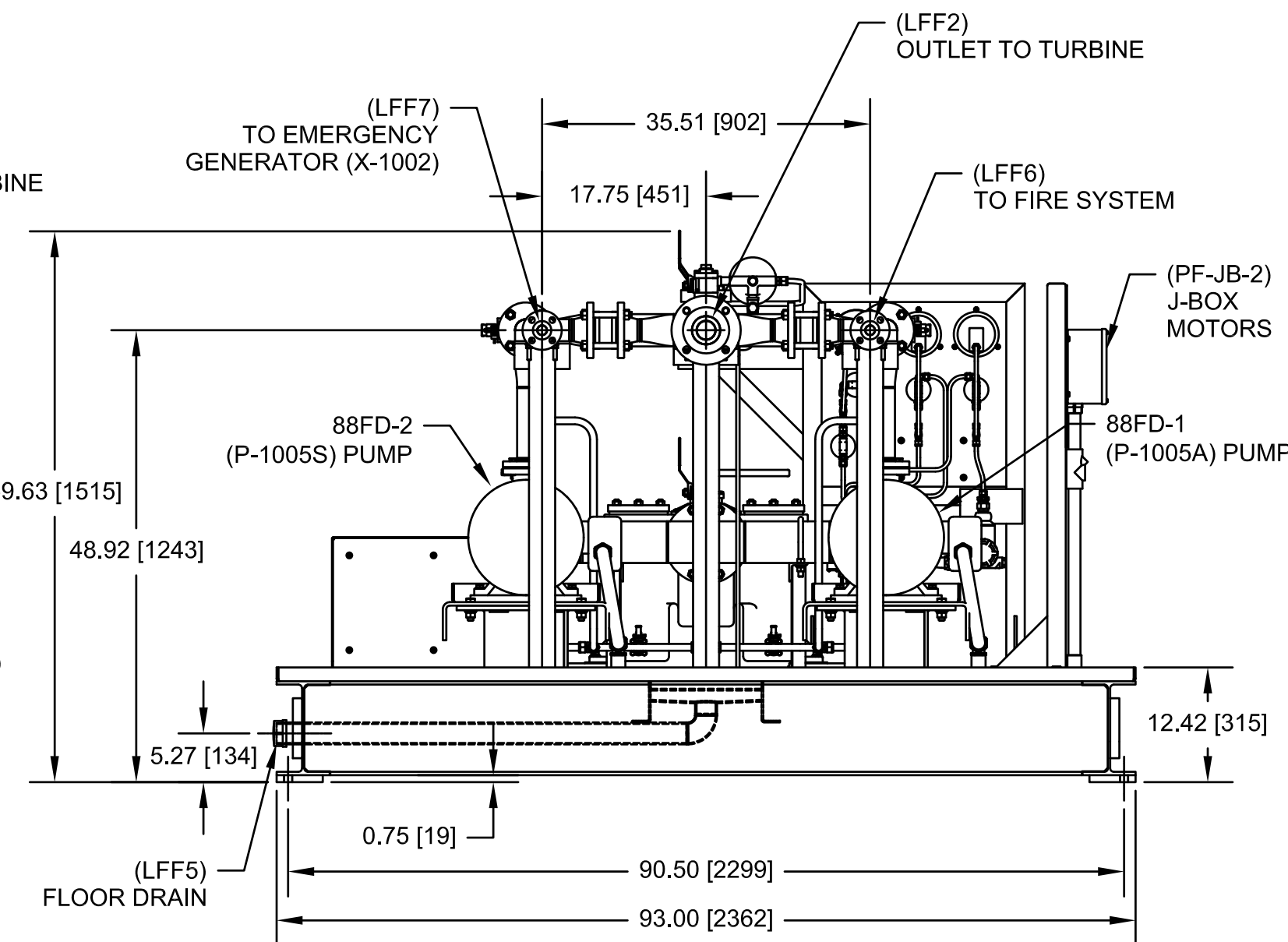
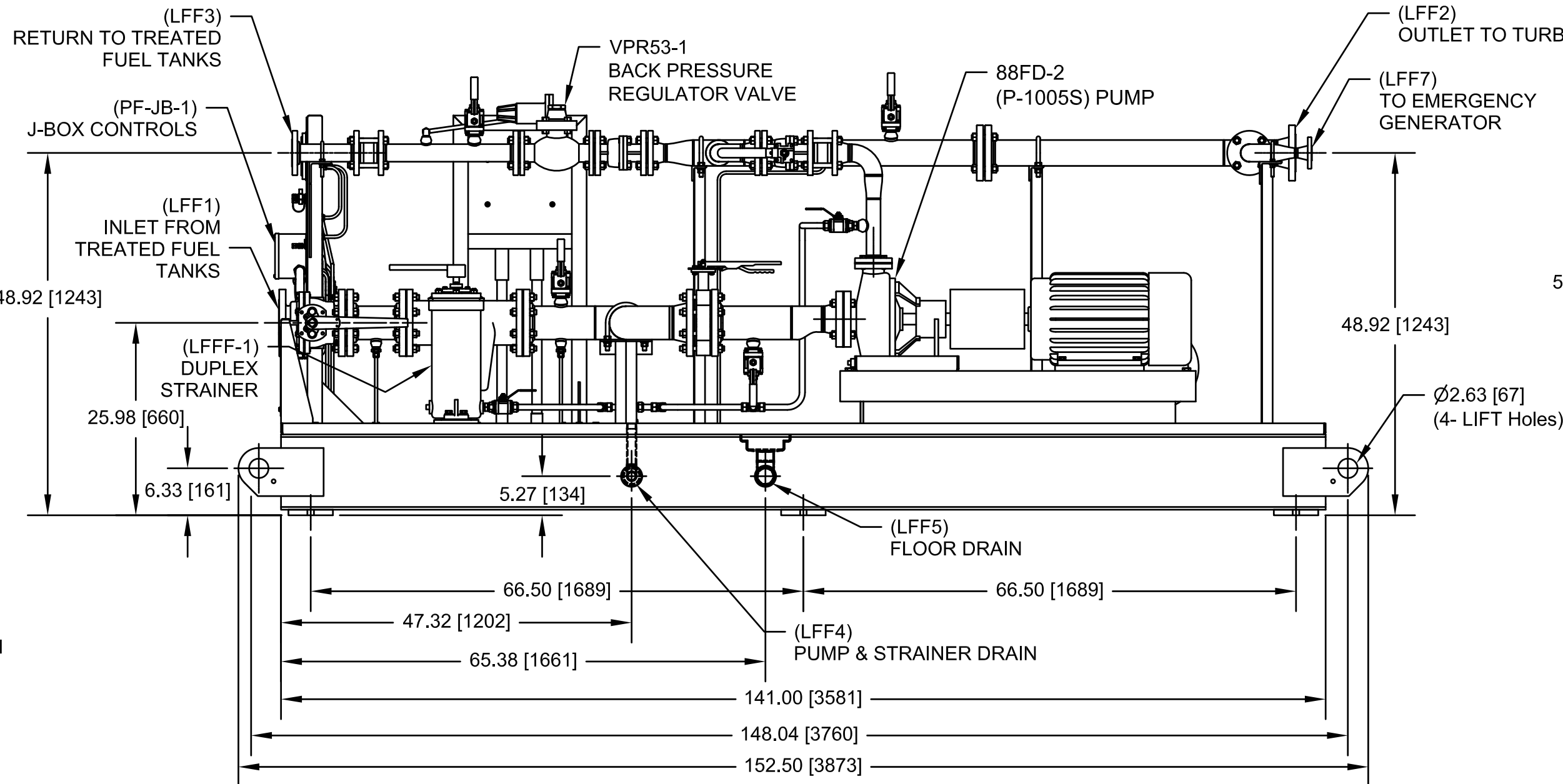
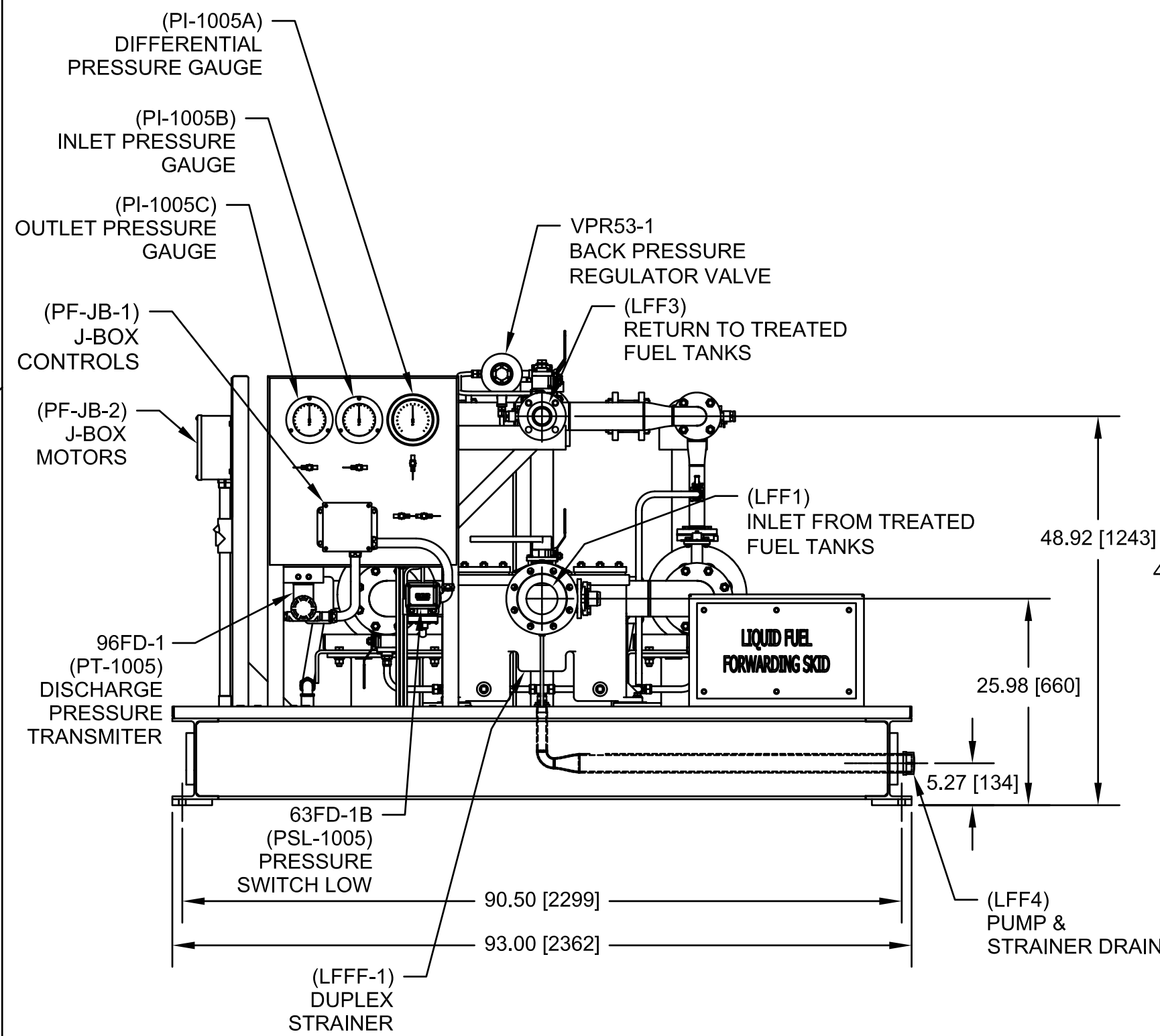
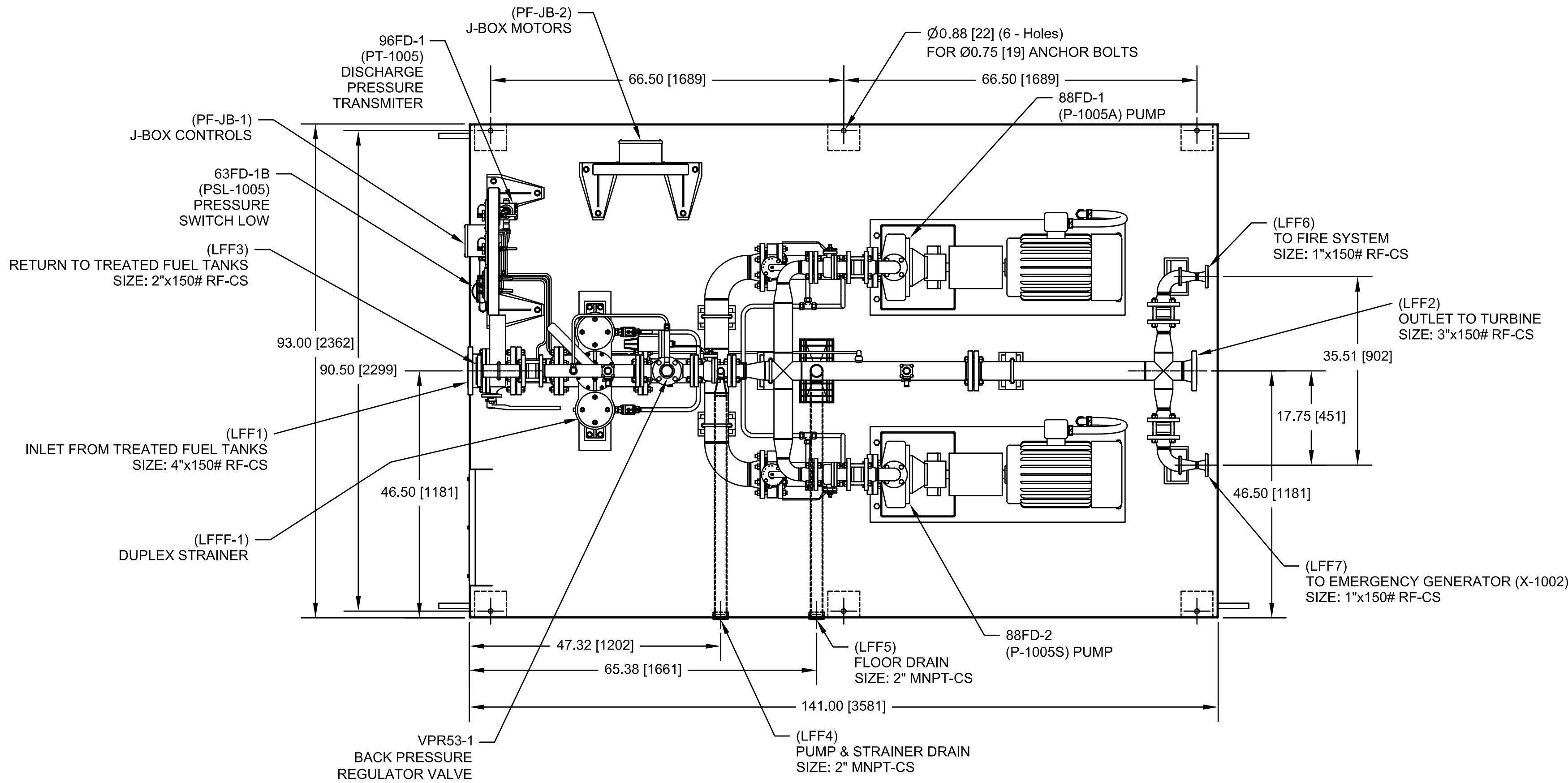
REV.	FECHA	REVISIONES O MODIFICACIONES	DIBUJO	REVISO	APROBO
△					
△					
△	29/08/11	ISSUED FOR CONSTRUCTION	SAB	CB	TK
△	13/07/11	ISSUED FOR REVIEW	SAB	CB	TK
△	01/04/11	ISSUED FOR REVIEW	SAB	CB	TK

REF. FABRICANTE	FABRICANTE	O/C:

N° DE DOCUMENTO	DESCRIPCIÓN	REV.	FECHA
AGM-02-0204-PLA-I-0046	DEVICE SUMMARY		
AGM-02-0204-PLA-G-0061	INTERCONNECTION POINTS		
AGM-02-0204-PLA-P-0009	PROCESS FLOW DIAGRAM		
AGM-02-0204-PLA-P-0048	LIQUID FUEL SYSTEM P&ID (SHT 1 & 2)		
AGM-02-0204-PLA-G-0057	PLOT PLAN (SHT 2)		

PROYECTO N°:	REV:	DESCRIPCIÓN	FECHA
409-2956-1		AMPLIACIÓN DE LA CAPACIDAD DE GENERACIÓN Y TRANSPORTE DE ELECTRICIDAD EN LA ISLA DE MARGARITA	29/08/11
PROYECTO:	ESCALA:	PLANO N°:	
REVISADO: C. Brown	CALCULO:	FECHA:	29/08/11
DIBUJO: S. Boerckel	REVISADO: J. Castillo	DISK. N°	
APROBADO: T. Koontz	ESC./PLOTEO:	ARCHIVO:	
ARCHIVO:	APROBADO: M. Monticelli	ARCHIVO:	

IMPORTANTE
ESTE PLANO FUE ELABORADO EN AUTOCAD V2008
CUALQUIER MODIFICACION REALIZADA EN CAMPO
DEBERA SER NOTIFICADO A LA UNIDAD
RESPONSABLE.
QUEDA PROHIBIDO CORREGIR ESTE PLANO SIN
AUTORIZACION DE ESTA UNIDAD.
ALL DIMENSIONS IN BRACKETS [] ARE
MILLIMETER; EXPRESSED DIMENSION
ARE INCHES



- NOTES:
- DO NOT PAINT INTERNALLY OR EXTERNALLY THREADED PARTS OR PARTS WITH FINISHED SURFACES THAT HAVE BEEN MACHINED FOR TIGHT TOLERANCE FITUP.
 - PAINT FINISH:
BLAST SSPC-SP10NACE 2,2 mil
2-COATS PHENICON HS (LIGHT GRAY)
PART-A (920A175)
PART-B (700-C-685)
H&C SHARK GRIP ADDITIVE (SLIP RESISTANT ADDITIVE) ON WALKING SURFACES.
 - CHECK FOR RESIDUAL STRESS AT THE PUMP PRIOR TO RELEASE AND OPERATION.
 - PRIOR TO OPERATION, THE FOLLOWING INSPECTIONS & TASKS SHOULD BE PERFORMED. -ALIGNMENT OF THE MOTOR & PUMP.
-LUBRICATION OF THE MOTOR & PUMP.
-CALIBRATION OF THE INSTRUMENTS & GAUGES.
-VISUAL INSPECTION OF THE STARINER BASKETS.
 - SKID WEIGHT = 6200 lbs [2812kg]
 - ANCHOR SIZE = $\varnothing 0.75$ [19]
 - REFER TO DRAWING _____ FOR FOUNDATION DETAILS
 - REFER TO AGM-02-0204-PLA-G-0061 FOR INTERCONNECTIONS
 - REFER TO AGM-02-0204-PLA-I-0046 (DEVICE SUMMARY) MLI 0414 FOR INSTRUMENT SET POINTS.

REV.	FECHA	REVISIONES O MODIFICACIONES	DIBUJO	REVISO	APROBO
△					
△					
△	29/08/11	ISSUED FOR CONSTRUCTION	SAB	CB	TK
△	13/07/11	ISSUED FOR REVIEW	SAB	CB	TK
△	01/04/11	ISSUED FOR REVIEW	SAB	CB	TK

REF. FABRICANTE	FABRICANTE	O/C:

AGM-02-0204-PLA-I-0046 DEVICE SUMMARY					
AGM-02-0204-PLA-G-0061 INTERCONNECTION POINTS					
AGM-02-0204-PLA-P-0009 PROCESS FLOW DIAGRAM					
AGM-02-0204-PLA-P-0048 LIQUID FUEL SYSTEM P&ID (SHT 1 & 2)					
AGM-02-0204-PLA-G-0057 PLOT PLAN (SHT 2)					
N° DE DOCUMENTO	DESCRIPCION	REV.	FECHA		
DOCUMENTOS DE REFERENCIA					
DERWICK	ProEnergy	CORPOELEC	Electricidad de Caracas	AGENCIA NACIONAL DE INGENIERIA Y PROTECCION	SENECA
AMPLIACIÓN DE LA CAPACIDAD DE GENERACIÓN Y TRANSPORTE DE ELECTRICIDAD EN LA ISLA DE MARGARITA					
LIQUID FUEL FORWARDING SKID					
DUAL FUEL MOD. UNITS 298034 & 298035					
(GENERAL ARRANGEMENT P1005A/S)					
PLANO N°:	REV:	PROYECTO:	ESCALA:	1:15	PLANO No:
PROYECTO N°:		FECHA:	29/08/11		
409-2956-1					
REVISADO:	C. Brown	CALCULO:	J. Castillo	DISK. N°	
DIBUJO:	S. Boerckel	REVISADO:	J. Castillo	ESC./PLOTED:	
APROBADO:	T. Koontz	APROBADO:	M. Monticelli	ARCHIVO:	
ARCHIVO:					
PAGINA:	2	DE:	2	REV:	0